



# Tanners Meadow, Betchworth

£625,000







“

This spacious, beautifully extended four-bedroom home offers growing families the perfect place to settle in and enjoy all that this fantastic village has to offer.

”





Tanners Meadow represents an immaculately maintained four-bedroom terraced house, offering approximately 1,551 square feet of thoughtfully designed living space. This delightful home is perfectly situated within a peaceful residential area, just a short stroll from the village green, local shop, and a well-regarded primary school and nursery, making it an ideal choice for families.

Upon entering, you are greeted by a welcoming hallway that sets the tone for the quality and spaciousness found throughout the property. The heart of the home is undoubtedly the impressive open-plan kitchen and dining room. This inviting space features elegant shaker-style cabinetry, solid wood worktops, and a central island, all illuminated by natural light streaming in from a skylight and wide patio doors that lead to the garden. Adjacent to this area, a separate living room offers a serene retreat, complete with lovely views of the garden.

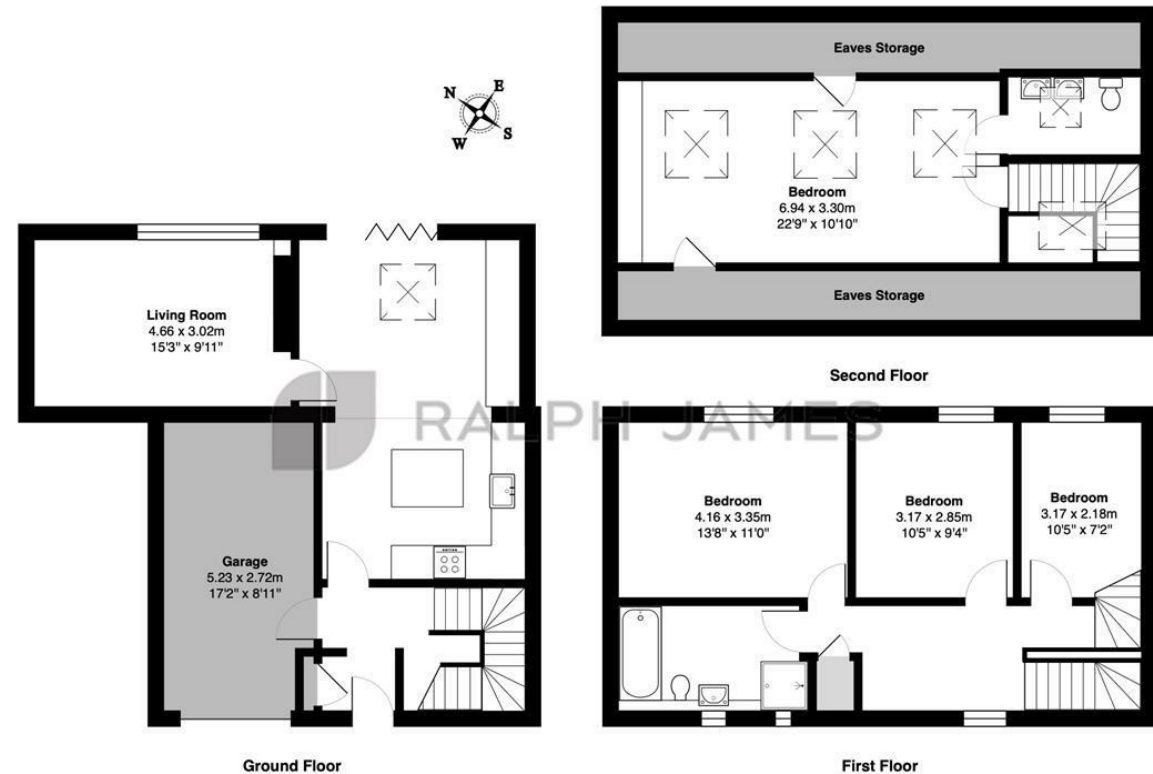
The first floor accommodates three generously sized bedrooms, which are served by a stylish family bathroom. Ascending to the second floor, you will discover a superb principal suite that boasts stunning far-reaching views towards Box Hill, along with a sleek en-suite cloakroom for added convenience.

Outside, the rear garden is a true gem, combining decking and lawn to create a private and tranquil oasis, perfect for entertaining guests or enjoying family time. Additional benefits include off-road parking and an integral garage, enhancing the practicality of this wonderful home.



## Need to know

- 4 spacious bedrooms
- 2 modern bathrooms
- Open-plan kitchen/diner
- Shaker-style kitchen cabinets
- Integral garage included
- Generous rear garden
- Quiet Brockham location
- Near village Green
- Close to primary school



Tanners Meadow, Strood Green, Betchworth  
Total Area: 144.1 m<sup>2</sup> ... 1551 ft<sup>2</sup> (excluding eaves storage)  
FOR ILLUSTRATIVE PURPOSES ONLY.

Whilst every attempt has been made to ensure the accuracy of the floor plan shown, all measurements, positioning, fixtures, features, fittings and any other data shown are an approximate interpretation for illustrative purposes only and are not to scale.

No responsibility is taken for any error, omission, miss-statement or use of data shown.

The above statement applies to both 'Still Moving London LTD' and the Company or individual displaying this floor plan.

Unauthorised reproduction prohibited.

Â© Still Moving London LTD (www.stillmoving.london)

 RALPH JAMES

## Interested?

dorking@ralphjames.co.uk  
01306 284555

#

ralphjames.co.uk